

Celebrating Our 30<sup>th</sup>  
Anniversary Year

*Adding value by infusing period architecture with the modern lifestyle*

## - HAPPY NEW YEAR -

Thank you for another year of success for our company. Our family, associate painters, craftsmen, and landscape installers all thank you from the bottom of our hearts.

*Sincerely,  
Paul Helmer*

## SUBURBAN WORK:

Landscaping for a home on North 66<sup>th</sup> Terrace now has the beginning bones of a great landscape plan.

Two improvements will be achieved:

1. Problems of thin grass at the base of 3 thick shade trees will be solved.
2. Tying the yard together to give it more aesthetics will enable the home to have greater Curb Appeal.



*Your newsletter with help for design & color*



**QUESTION** – I have an ugly white painted brick fireplace what should I do with it?

**RESPONSE** – Brad and Julie Smith received an early Christmas present with the faux painted brick fireplace at their Drumm Farm Directors home. Because brickwork has been painted does not mean you need to put up with its ugly anemic look. We used a brown-tone red with many colors added to modulate the brick face to approximate that of a fired clay surface. Mortar was done in a darker concrete tone to add depth and to contrast with the brick face.



**Our installation included a cut stone curbing which helps define the yard and plant beds.**



**Above a split stone pathway connects the front entry sidewalk with the side yard. Next spring ground covers will grace the connections between the trees. Ground covers often appreciate shade locations and become thick in locations like this. With the addition of weed preventers the owner will end up with a yard that is both beautiful and nearly maintenance free.**



**A dry creek-bed now carries water from a central downspout and feeds water into the plant beds.**

## **Urban Work:**



## **Waldo Neighborhood Decorative Plaster Painting**

**Ornamental plasterwork known for the interiors of several Tudor homes in Kansas City are often poorly painted. We were asked to paint this plaster frieze in the dining room of Brad & Gretchen Walsh. After painting the flowers and fruit an antique dusting was used to give the paint an old-world look. Trims and panels are given antiquing and make use of different values of the same color.**



Next year the shaded beds will appear much like one of our past HYDE PARK landscape installs. Above is a shaded location with meandering pathway and variety in ground covers and perennial plantings.



Variation in plants provide texture and color.

Why didn't I think of this????



Last month we highlighted the work of Bill Garth of C.M. Works Company Inc. as an excellent gutter-man metal smith.

This month we highlight the image of Ted Hurt, an architect who will be performing architectural work with our company. We are very happy to work with Ted on your design projects.



Along with Ted we work with the abilities of several competent contractors be they plumbers, electricians, carpenters and painters. These are only part of our offerings to you as our appreciated clients.

**Interesting furnishings such as the above and below are part of our Architectural library. Call and ask to make use of our capabilities to help you purchase these and other innovative and beautiful pieces.**



**Folding chairs** can often save room and help provide seating for a number of guests in a recreation room, patio or any other place where extra seating is needed. A little bit of innovation can help when guests come over and seating is needed.

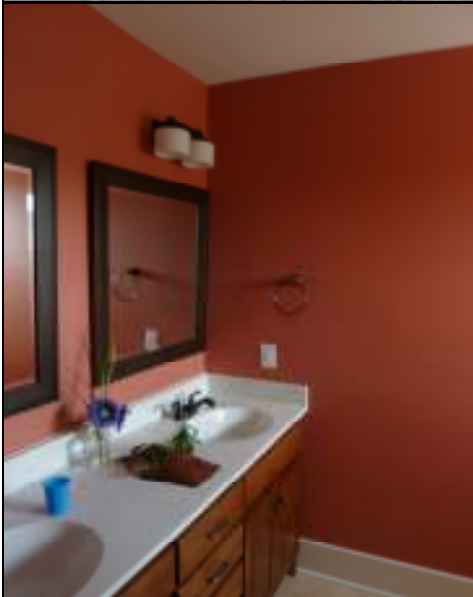


**Fountain Faucet**  
To the left is a mini drinking fountain that can easily be converted to a regular faucet.

## Interior Colors:



Bedrooms should be restful while a bathroom can be a bit more alive with color. As a room for beginning a new day.



**Above is a sofa combo** that converts to a double deck bed perhaps for guests perhaps for the kids.



**Left a popup electrical receptacle** helps to bring needed plugs where needed in the kitchen counter or island.



**Left is another pop-up electrical receptical** which allows 5 plugs to be serviced. This helps get unneeded multi-plug extensions off of the floor.

# For your benefit and that of your neighborhood Association!



## **“Pictures are worth a thousand words!”**

**Touch of Distinction has been asked to give talks on:**

- **Period Color Schemes,**
- **Faux Finishes,**
- **Curb Appeal and**
- **Landscape Design.**

**These presentations have been under the auspices of several Neighborhood associations, Historic Kansas City Foundation, Realtor Groups and philanthropic organizations such as the Lions Club, Rotary Club, and others.**

**Our presentations are full of interesting before and after images that help create provoking thoughts of what can be done not only to improve ones own house but also of that which constitutes help for an entire neighborhood. What about neighborhood markers? What about landscaping on city owned property of entry gateways. All can constitute improvement to any neighborhood. Interesting stories often accompany these talks along with the reaction of people living in their uniquely improved homes.**





*Oh What a Difference – Before and After*



*Thank you for another year of adding to the beauty of your neighborhood!*